



Reseller API

Technical Document

Prepared By
Innovations Team

THE "NO PROBLEM" PEOPLE

Table of Contents

- I. Revision History 3
- II. Purpose of this document 4
- III. Glossary of Terms & Abbreviations 4
- IV. Methods provided by VL 5
 - 1. SendSMS 5
 - 2. SendSMSWithDLR 8
 - 3. SendSMSWithValidity 11
 - 4. SendToMany (API only)..... 14
 - 5. SendOfflineSMS..... 16
 - 6. SendSMSWithTemplate (Web service only) 19
 - 7. CheckCredit..... 21
 - 8. CheckDLRStatus (API only)..... 23
- V. Methods to be provided by Client 24
 - 1. ReceiveDLR (API) 24
- VI. All Code Values 26

I. Revision History

Date	Version	Author	Description
12/09/2019	V1.0	Heba El Kordy	<ul style="list-style-type: none">Initial document
02/01/2020	V1.1	Amr Farrag	<ul style="list-style-type: none">Update API complete URL of SendSMSWithValidity methodAdding the error codes "-22" & "-32" to All code values section
09/02/2020	V1.2	Amr Farrag	<ul style="list-style-type: none">Update API complete URL of all methods
24/06/2020	V1.3	Amr Farrag	<ul style="list-style-type: none">Adding "Check Credit" API and Web service
15/10/2020	V1.4	Amr Farrag	<ul style="list-style-type: none">Update "Request Values Sample" of "ReceiveDLR" APIAdding "CheckDLRStatus" and "SendToMany" APIsMention the new "White List IPs" and "Black List Dials" features
15/08/2023	V1.5	Amr Farrag	<ul style="list-style-type: none">Adding the response code "-8"

II. Purpose of this document

- This document demonstrates how to use web services and APIs that provided by VictoryLink to send SMSs by client from his purchased quota and check his credit.
- Victory Link provides the following list of web services:
 - SendSMS
 - SendSMSWithDLR
 - SendSMSWithValidity
 - SendOfflineSMS
 - SendSMSWithTemplate
 - CheckCredit
- Victory Link provides the following list of APIs:
 - SendSMS
 - SendSMSWithDLR
 - CheckDLRStatus
 - SendSMSWithValidity
 - SendToMany
 - SendOfflineSMS
 - CheckCredit
 - GetDLRResponseStatus
- The provided web services use SOAP protocol, and the client can request and respond the data through it using XML format.
- Provided APIs use REST protocol, and client can request and respond data through it using JSON format.
- The URLs of the Web services accepts POST and GET methods, but the URLs of the APIs use POST method only.
- Client can define list of IPs as **White Listed IPs** for their account, and SMSs will be sent by that account through the defined **White List IPs** only.
- Client can define list of dials as **Black Listed Dials** for their account, and that account will be eligible to send SMSs to any dial except the defined **Black List Dials**.

III. Glossary of Terms & Abbreviations

Term	Definition
VL	Refers to <u>Victory Link</u> the SMS platform services provider
Client	Refers to <u>The entity</u> which has account at Victory link SMS platform
Fake Sender	An alphanumeric text appears to the SMS receivers as the message sender name (Instead of the mobile number)
SMS Quota	The SMS count which available for the client to send using his account
DLR	Delivery reporting is a feature that reports back SMS message delivery status

IV. Methods provided by VL:

1. SendSMS:

This method used to send SMSs only (without DLR – Without validity).

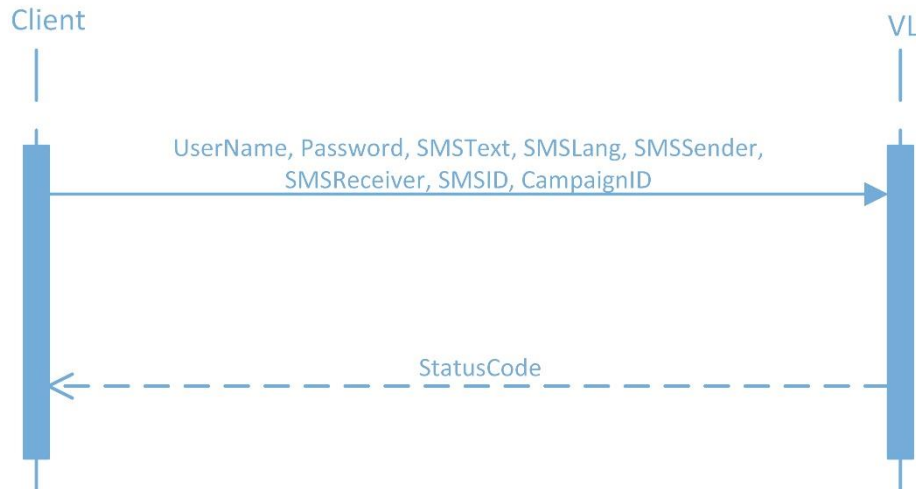


Figure 1 "SendSMS sequence diagram"

Request Parameters:

Parameter	Description	Data Type
UserName*	<ul style="list-style-type: none"> User name provided by Victory Link for the sender account 	String
Password*	<ul style="list-style-type: none"> Password provided by Victory Link for the sender account 	String
SMSText*	<ul style="list-style-type: none"> The text of the message 	String
SMSLang*	<ul style="list-style-type: none"> SMS language <ul style="list-style-type: none"> “E” for English “A” for Arabic 	String
SMSSender*	<ul style="list-style-type: none"> The SMS fake sender 	String
SMSReceiver*	<ul style="list-style-type: none"> The dial that SMS will be sent to 	String
SMSID*	<ul style="list-style-type: none"> The SMS global unified ID that generated by client. 	GUID
CampaignID	<ul style="list-style-type: none"> The ID of SMS’s campaign, that identified by the client (Optional) 	String

- **Web service complete URL**
<https://smsvas.vlserv.com/VLSMSPlatformResellerAPI/SendSMSService/SMSSender.aspx?op=SendSMS>
- **Request Values Sample (XML)**

```
<?xml version="1.0" encoding="utf-8"?>
<soap12:Envelope xmlns:xsi="http://www.w3.org/2001/XMLSchema-instance"
xmlns:xsd="http://www.w3.org/2001/XMLSchema"
xmlns:soap12="http://www.w3.org/2003/05/soap-envelope">
<soap12:Body>
<SendSMSxmlns="http://tempuri.org/">
<UserName>myUser</UserName>
<Password>123456</Password>
<SMSText>Test</SMSText>
<SMSLang>e</SMSLang>
<SMSSender>Victory</SMSSender>
<SMSReceiver>01142220154</SMSReceiver>
<SMSID>0f6103e8-fd9a-4b53-00a3-f8fda400aa3a</SMSID>
</SendSMS>
</soap12:Body>
</soap12:Envelope>
```

- **Return Values Sample(XML)**

```
<?xml version="1.0" encoding="utf-8"?>
<soap12:Envelope xmlns:xsi="http://www.w3.org/2001/XMLSchema-instance"
xmlns:xsd="http://www.w3.org/2001/XMLSchema"
xmlns:soap12="http://www.w3.org/2003/05/soap-envelope">
  <soap12:Body>
    <SendSMSResponse xmlns="http://tempuri.org/">
      <SendSMSResult>0</SendSMSResult>
    </SendSMSResponse>
  </soap12:Body>
</soap12:Envelope>
```

Status code	Integer represents the service response code
--------------------	--

- **API complete URL**

<https://smsvas.vlserv.com/VLSMSPlatformResellerAPI/NewSendingAPI/api/SMSSEnder/SendSMS>

- **Request Values Sample (JSON)**

```
{
  "UserName": "myUser",
  "Password": "123456",
  "SMSText": "Test",
  "SMSLang": "e",
  "SMSSender": "Victory",
  "SMSReceiver": "201542220154",
  "SMSID": "b0a3a0de-3748-4308-1f93-b6ce1a3a8108"
}
```

- **Return Values Sample(JSON)**

```
0
```

Status code	Integer represents the service response code
--------------------	--

2. SendSMSWithDLR:

This method used to send SMSs with the DLR report.

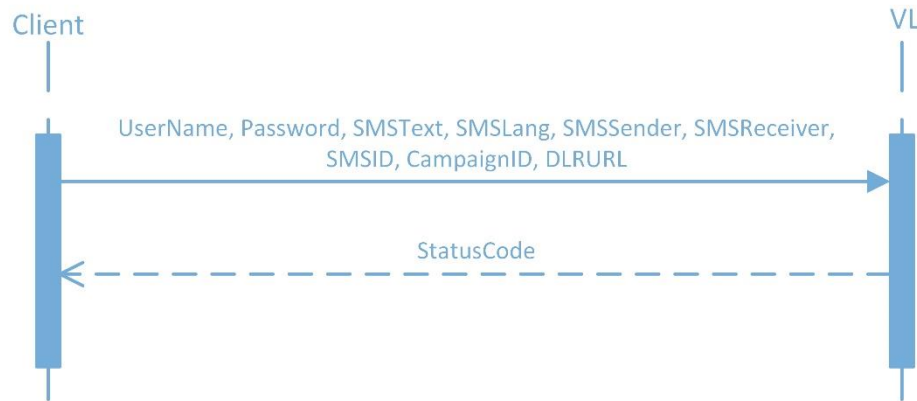


Figure 2 "SendSMSWithDLR sequence diagram"

Request Parameters:

Parameter	Description	Data Type
UserName*	<ul style="list-style-type: none"> User name provided by Victory Link for the sender account 	String
Password*	<ul style="list-style-type: none"> Password provided by Victory Link for the sender account 	String
SMSText*	<ul style="list-style-type: none"> The text of the message 	String
SMSLang*	<ul style="list-style-type: none"> SMS language <ul style="list-style-type: none"> “E” for English “A” for Arabic 	String
SMSSender*	<ul style="list-style-type: none"> The SMS fake sender 	String
SMSReceiver*	<ul style="list-style-type: none"> The dial that SMS will be sent to 	String
SMSID*	<ul style="list-style-type: none"> The SMS global unified ID that generated by client. 	GUID
CampaignID	<ul style="list-style-type: none"> The ID of SMS’s campaign, that identified by the client (Optional) 	String
DLRURL	<ul style="list-style-type: none"> The URL where the client receives the DLR status (Optional) If client didn’t enter it, the system will use the URL that provided by the client with his account on VL SMS platform. 	String

- **Web service complete URL**
<https://smsvas.vlserv.com/VLSMSPlatformResellerAPI/SendSMSService/SMSSender.asmx?op=SendSMSWithDLR>
- **Request Values Sample (XML)**

```
<?xml version="1.0" encoding="utf-8"?>
<soap12:Envelope xmlns:xsi="http://www.w3.org/2001/XMLSchema-instance"
xmlns:xsd="http://www.w3.org/2001/XMLSchema"
xmlns:soap12="http://www.w3.org/2003/05/soap-envelope">
<soap12:Body>
<SendSMSWithDLR xmlns="http://tempuri.org/">
<UserName>myUser</UserName>
<Password>123456</Password>
<SMSText>Test</SMSText>
<SMSLang>e</SMSLang>
<SMSSender>Victory</SMSSender>
<SMSReceiver>01142220154</SMSReceiver>
<SMSID>0f6103e8-fd9a-4b53-00a3-f8fda400aa3a</SMSID>
<DLRURL>http://197.246.7.148:8020/VLSMSPlatformResellerAPI/NewSendingAPI/TestDLRReport/api/DLRReport/TestDLRStatus</DLRURL>
</SendSMSWithDLR>
</soap12:Body>
</soap12:Envelope>
```

- **Return Values Sample (XML)**

```
<?xml version="1.0" encoding="utf-8"?>
<soap12:Envelope xmlns:xsi="http://www.w3.org/2001/XMLSchema-instance"
xmlns:xsd="http://www.w3.org/2001/XMLSchema"
xmlns:soap12="http://www.w3.org/2003/05/soap-envelope">
  <soap12:Body>
    <SendSMSWithDLRResponse xmlns="http://tempuri.org/">
      <SendSMSWithDLRResult>0</SendSMSWithDLRResult>
    </SendSMSWithDLRResponse>
  </soap12:Body>
```

Status code	Integer represents the service response code
--------------------	--

- **API complete URL**

<https://smsvas.vlserv.com/VLSMSPlatformResellerAPI/NewSendingAPI/api/SMSSEnder/SendSMSWithDLR>

- **Request Values Sample (JSON)**

```
{
  "UserName": "myUser",
  "Password": "123456",
  "SMSText": "Test",
  "SMSLang": "a",
  "SMSSender": "Victory",
  "SMSReceiver": "201542220154",
  "SMSID": "b0a3a0de-3748-4308-1f93-b6ce1a3a8108",
  "DLRURL": "http://197.246.7.148:8020/VLSMSPlatformResellerAPI/NewSendingAPI/TestDLRReport/api/DLRReport/TestDLRStatus"
}
```

- **Return Values Sample (JSON)**

```
0
```

Status code	Integer represents the service response code
--------------------	--

3. SendSMSWithValidity:

This method used to send SMS with the feature of sending schedule/on spot, and retrying to send the failed messages.

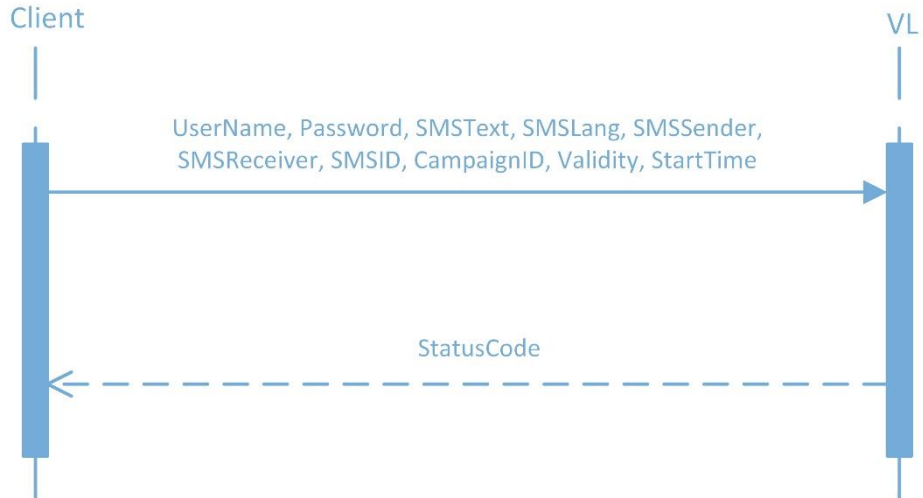


Figure 3 "SendSMSWithValidity sequence diagram"

Request Parameters:

Parameter	Description	Data Type
UserName*	<ul style="list-style-type: none"> User name provided by Victory Link for the sender account 	String
Password*	<ul style="list-style-type: none"> Password provided by Victory Link for the sender account 	String
SMSText*	<ul style="list-style-type: none"> The text of the message 	String
SMSLang*	<ul style="list-style-type: none"> SMS language <ul style="list-style-type: none"> “E” for English “A” for Arabic 	String
SMSSender*	<ul style="list-style-type: none"> The SMS fake sender 	String
SMSReceiver*	<ul style="list-style-type: none"> The dial that SMS will be sent to 	String
SMSID*	<ul style="list-style-type: none"> The SMS global unified ID that generated by client. 	GUID
CampaignID	<ul style="list-style-type: none"> The ID of SMS’s campaign, that identified by the client (Optional) 	String
Validity	<ul style="list-style-type: none"> The period in minutes which the system keeps retrying to send the failed messages (Optional) 	String

	<ul style="list-style-type: none"> • In case of the defined time ended without sending the message, the message sending status will be "Failed". • If the client didn't enter the validity value, the system will use the value that set before in his account information on VL SMS platform <ul style="list-style-type: none"> ○ If the system didn't find it, it will use the default value which is 3 minutes 	
In while StartTime	<ul style="list-style-type: none"> • Time to start sending SMS (Optional) • If the client didn't enter it, the system will send the SMS on spot 	String

- **Web service complete URL**

<https://smsvas.vlserv.com/VLSMSPlatformResellerAPI/SendSMSService/SMSSender.asmx?op=SendSMSWithValidity>

- **Request Values Sample (XML)**

```
<?xml version="1.0" encoding="utf-8"?>
<soap12:Envelope xmlns:xsi="http://www.w3.org/2001/XMLSchema-instance"
xmlns:xsd="http://www.w3.org/2001/XMLSchema"
xmlns:soap12="http://www.w3.org/2003/05/soap-envelope">
<soap12:Body>
<SendSMSWithValidity xmlns="http://tempuri.org/">
<UserName>myUser</UserName>
<Password>123456</Password>
<SMSText>Test</SMSText>
<SMSLang>e</SMSLang>
<SMSSender>Victory</SMSSender>
<SMSReceiver>01142220154</SMSReceiver>
<SMSID>0f6103e8-fd9a-4b53-00a3-f8fda400aa3a</SMSID>
<Validity>5</Validity>
  <StartTime>25/08/2019 16:48:00</StartTime>
</SendSMSWithValidity>
</soap12:Body>
</soap12:Envelope>
```

- **Return Values Sample (XML)**

```
<?xml version="1.0" encoding="utf-8"?>
<soap12:Envelope xmlns:xsi="http://www.w3.org/2001/XMLSchema-instance"
xmlns:xsd="http://www.w3.org/2001/XMLSchema"
xmlns:soap12="http://www.w3.org/2003/05/soap-envelope">
  <soap12:Body>
    <SendSMSWithValidityResponse xmlns="http://tempuri.org/">
      <SendSMSWithValidityResult>0</SendSMSWithValidityResult>
    </SendSMSWithValidityResponse>
  </soap12:Body>
```

Status code	Integer represents the service response code
--------------------	--

- **API complete URL**

<https://smsvas.vlserv.com/VLSMSPlatformResellerAPI/NewSendingAPI/api/SMSSEnder/SendSMSWithUserSMSIdAndValidity>

- **Request Values Sample (JSON)**

```
{
  "UserName": "myUser",
  "Password": "123456",
  "SMSText": "Test",
  "SMSLang": "e",
  "SMSSender": "Victory",
  "SMSReceiver": "201542220154",
  "SMSID": "b0a3a0de-3748-4308-1f93-b6ce1a3a8108",
  "Validity": "4",
  "StartTime": "15/09/2019 16:48:00"
}
```

- **Return Values Sample (JSON)**

```
0
```

Status code	Integer represents the service response code
--------------------	--

4. SendToMany: (API only)

This method used to send SMSs to several dials.

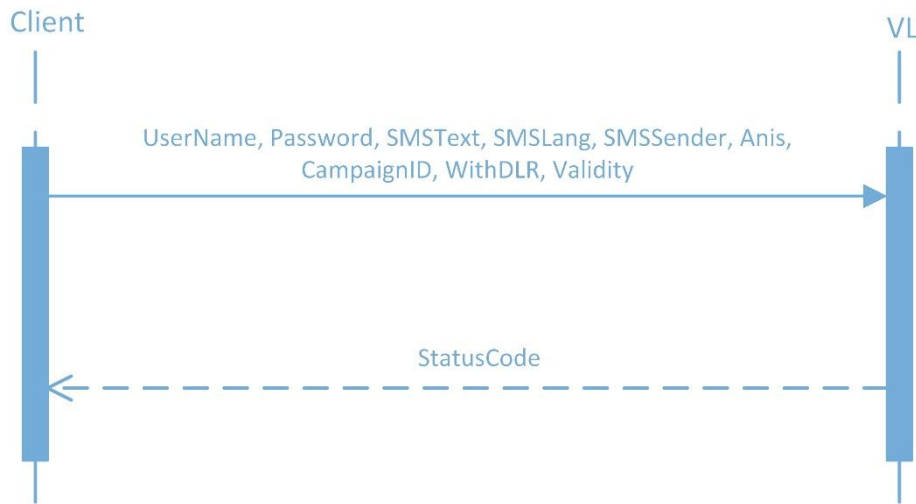


Figure 4 "SendToMany sequence diagram"

Request Parameters:

Parameter	Description	Data Type
UserName*	<ul style="list-style-type: none"> User name provided by Victory Link for the sender account 	String
Password*	<ul style="list-style-type: none"> Password provided by Victory Link for the sender account 	String
SMSText*	<ul style="list-style-type: none"> The text of the message 	String
SMSLang*	<ul style="list-style-type: none"> SMS language <ul style="list-style-type: none"> "E" for English "A" for Arabic 	String
SMSSender*	<ul style="list-style-type: none"> The SMS fake sender 	String
Anis*	<ul style="list-style-type: none"> Dials that message are sent to, following by the SMSs' GUIDs which created by the client 	String
CampaignID	<ul style="list-style-type: none"> The ID of SMSs' campaign, that identified by the client (Optional) 	String
WithDLR	<ul style="list-style-type: none"> Determine whether client will receive DLR for sent SMSs or not: <ul style="list-style-type: none"> "true" for sending with DLR "false" for sending without DLR 	String

Validity	<ul style="list-style-type: none"> • The period in minutes which the system keeps retrying to send the failed messages (Optional) • In case of the defined time ended without sending the message, the message sending status will be "Failed". • If the client didn't enter the validity value, the system will use the value that set before in his account information on VL SMS platform <ul style="list-style-type: none"> ○ If the system didn't find it, it will use the default value which is 3 minutes 	String
----------	---	--------

• **API complete URL**

<https://smsvas.vlserv.com/VLSMSPlatformResellerAPI/NewSendingAPI/api/SMSSEnder/SendToMany>

• **Request Values Sample (JSON)**

```
{
  "UserName": "myUser",
  "Password": "123456789",
  "SMSText": "Test",
  "SMSLang": "e",
  "SMSSender": "Victory",
  "Anis": ["01024875436,5f50f470-3295-4e35-9005-2f54a0fd7449", "01024875437,5f50f470-3295-4e35-9005-2f54a0fd7459", "01024875438,5f50f470-3295-4e35-9005-2f54a0fd7849"],
  "Validity": "4",
  "WithDLR": "true"
}
```

• **Return Values Sample (JSON)**

```
0
```

Status code	Integer represents the service response code
--------------------	--

5. SendOfflineSMS:

This method used to receive SMS from the client and send it offline by Victory Link for better sending performance.

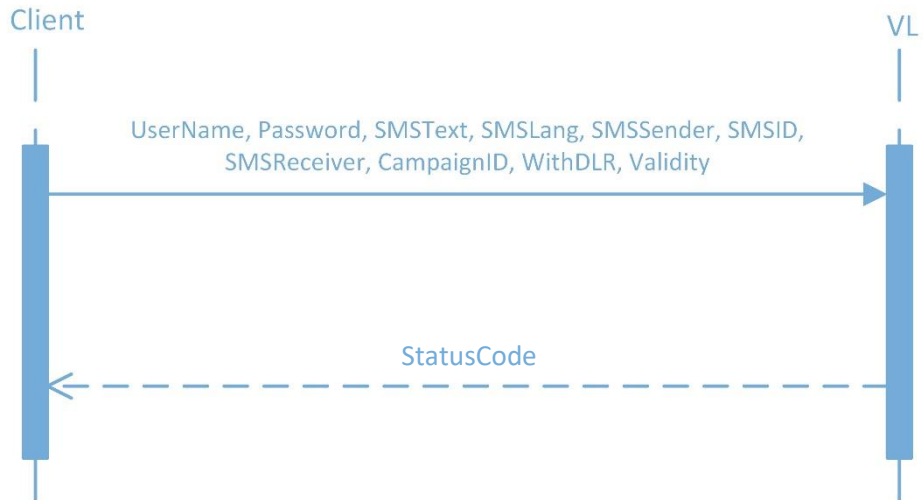


Figure 5 "SendOfflineSMS Sequence diagram"

Request Parameters:

Parameter	Description	Data Type
UserName*	<ul style="list-style-type: none"> User name provided by Victory Link for the sender account 	String
Password*	<ul style="list-style-type: none"> Password provided by Victory Link for the sender account 	String
SMSText*	<ul style="list-style-type: none"> The text of the message 	String
SMSLang*	<ul style="list-style-type: none"> SMS language <ul style="list-style-type: none"> “E” for English “A” for Arabic 	String
SMSSender*	<ul style="list-style-type: none"> The SMS fake sender 	String
SMSReceiver*	<ul style="list-style-type: none"> The dial that SMS will be sent to 	String
SMSID*	<ul style="list-style-type: none"> The SMS global unified ID that generated by client. 	GUID
CampaignID	<ul style="list-style-type: none"> The ID of SMS’s campaign, that identified by the client (Optional) 	String
WithDLR	<ul style="list-style-type: none"> Determine whether client will receive DLR for sent SMSs or not: <ul style="list-style-type: none"> “true” for sending with DLR “false” for sending without DLR 	String

<p>Validity</p>	<ul style="list-style-type: none"> • The period in minutes which the system keeps retrying to send the failed messages (Optional) <ul style="list-style-type: none"> • In case of the defined time ended without sending the message, the message sending status will be "Failed". • If the client didn't enter the validity value, the system will use the value that set before in his account information on VL SMS platform <ul style="list-style-type: none"> ○ If the system didn't find it, it will use the default value which is 3 minutes 	<p>String</p>
-----------------	---	---------------

• **Web service complete URL**

<https://smsvas.vlserv.com/VLSMSPlatformResellerAPI/SendSMSService/SMSSender.asmx?op=SendOfflineSMS>

• **Request Values Sample (XML)**

```
<?xml version="1.0" encoding="utf-8"?>
<soap12:Envelope xmlns:xsi="http://www.w3.org/2001/XMLSchema-instance"
xmlns:xsd="http://www.w3.org/2001/XMLSchema"
xmlns:soap12="http://www.w3.org/2003/05/soap-envelope">
<soap12:Body>
<SendOfflineSMS xmlns="http://tempuri.org/">
<UserName>myUser</UserName>
<Password>123456</Password>
<SMSText>Test</SMSText>
<SMSLang>e</SMSLang>
<SMSSender>Victory</SMSSender>
<SMSReceiver>01142220154</SMSReceiver>
<SMSID>0f6103e8-fd9a-4b53-00a3-f8fda400aa3a</SMSID>
<CampaignID>6</CampaignID>
<WithDLR>true</WithDLR>
<Validity>3</Validity>
</SendOfflineSMS >
</soap12:Body>
</soap12:Envelope>
```

- **Return Values Sample (XML)**

```
<soap12:Envelope xmlns:xsi="http://www.w3.org/2001/XMLSchema-instance"
xmlns:xsd="http://www.w3.org/2001/XMLSchema"
xmlns:soap12="http://www.w3.org/2003/05/soap-envelope">
  <soap12:Body>
    <SendOfflineSMSResponse xmlns="http://tempuri.org/">
      <SendOfflineSMSResult>0</SendOfflineSMSResult>
    </SendOfflineSMSResponse>
  </soap12:Body>
```

Status code	Integer represents the service response code
--------------------	--

- **API complete URL**

<https://smsvas.vlserv.com/VLSMSPlatformResellerAPI/NewSendingAPI/api/SMSSender/SendOfflineSMS>

- **Request Values Sample (JSON)**

```
{
  "UserName": "myUser",
  "Password": "123456",
  "SMSText": "Test",
  "SMSLang": "e",
  "SMSSEnder": "Victory",
  "SMSReceiver": "01234626128",
  "SMSId": "0f6103e8-fd9a-4b53-00a3-f8fda400aa3a",
  "CampaignID": "1213af",
  "WithDLR": "True",
  "Validity": "4"
```

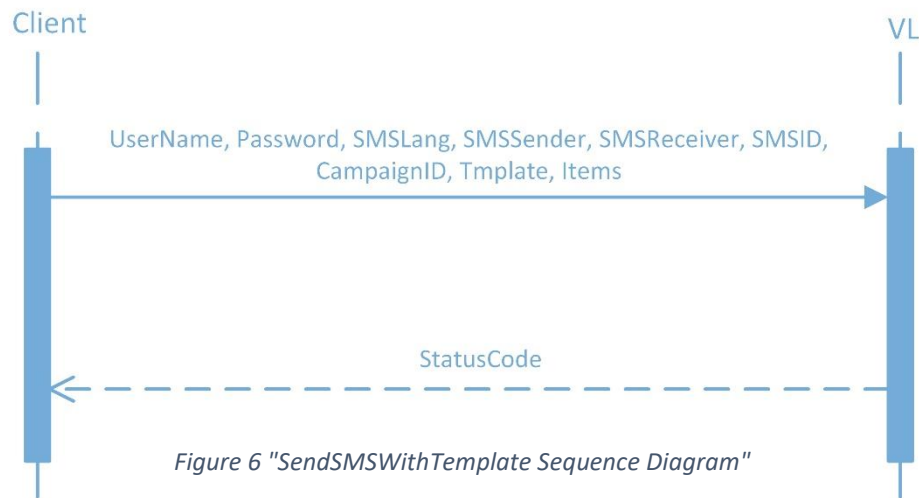
- **Return Values Sample(JSON)**

```
0
```

Status code	Integer represents the service response code
--------------------	--

6. SendSMSWithTemplate: (Web service only)

- This method used to send customized SMSs with placeholders.



Request Parameters:

Parameter	Description	Data Type
UserName*	<ul style="list-style-type: none"> • User name provided by Victory Link for the sender account 	String
Password*	<ul style="list-style-type: none"> • Password provided by Victory Link for the sender account 	String
SMSLang*	<ul style="list-style-type: none"> • SMS language <ul style="list-style-type: none"> ○ "E" for English ○ "A" for Arabic 	String
SMSSender*	<ul style="list-style-type: none"> • The SMS fake sender 	String
SMSReceiver*	<ul style="list-style-type: none"> • The dial that SMS will be sent to 	String
SMSID*	<ul style="list-style-type: none"> • The SMS global unified ID that generated by client. 	GUID
CampaignID	<ul style="list-style-type: none"> • The ID of SMS's campaign, that identified by the client (Optional) 	String
Template*	<ul style="list-style-type: none"> • The SMS's text with the possibility of adding place holders • The place holders replaced with the values which mentioned in the "Items" parameter • The place holder key added between two percentage signs → % % 	String

	<ul style="list-style-type: none"> In case of the client enters a key not included in the "Items" parameter, the SMS will be rejected 	
Items*	<ul style="list-style-type: none"> The place holder's value aligned with its key which used in the text of the parameter "template" It could be one place holder or more 	String

- Web service complete URL**

<https://smsvas.vlserv.com/VLSMSPlatformResellerAPI/SendSMSService/SMSSender.aspx?op=SendSMSWithTemplate>

- Request Values Sample (XML)**

```
<?xml version="1.0" encoding="utf-8"?>
<soap12:Envelope xmlns:xsi="http://www.w3.org/2001/XMLSchema-instance"
xmlns:xsd="http://www.w3.org/2001/XMLSchema"
xmlns:soap12="http://www.w3.org/2003/05/soap-envelope">
  <soap12:Body>
    <SendSMSWithTemplate xmlns="http://tempuri.org/">
      <UserName>myUser</UserName>
      <Password>123456</Password>
      <SMSLang>e</SMSLang>
      <SMSSender>Victory</SMSSender>
      <SMSReceiver>01062612890</SMSReceiver>
      <SMSID>0f6103e8-fd9a-4b58-00a3-f8fda400aa3a</SMSID>
      <Template>MR %Fname% we are pleased to inform you that your card that
        ended by %LastFourDigitsOfCardNo% won our big prize for more
        information call 99999</Template>
      <Data>
        <Item value="Ahmed" key="Fname" />
        <Item value="6789" key="LastFourDigitsOfCardNo" />
      </Data>
    </SendSMSWithTemplate>
  </soap12:Body>
</soap12:Envelope>
```

• **Return Values Sample (XML)**

```
<soap12:Envelope xmlns:xsi="http://www.w3.org/2001/XMLSchema-instance"
xmlns:xsd="http://www.w3.org/2001/XMLSchema"
xmlns:soap12="http://www.w3.org/2003/05/soap-envelope">
  <soap12:Body>
    <SendSMSWithTemplateResponse xmlns="http://tempuri.org/">
      <SendSMSWithTemplateResult>0</SendSMSResult>
    </SendSMSWithTemplateResponse>
  </soap12:Body>
```

Status code	Integer represents the service response code
--------------------	--

7. CheckCredit:

This method used to check client’s SMS quota on the system.

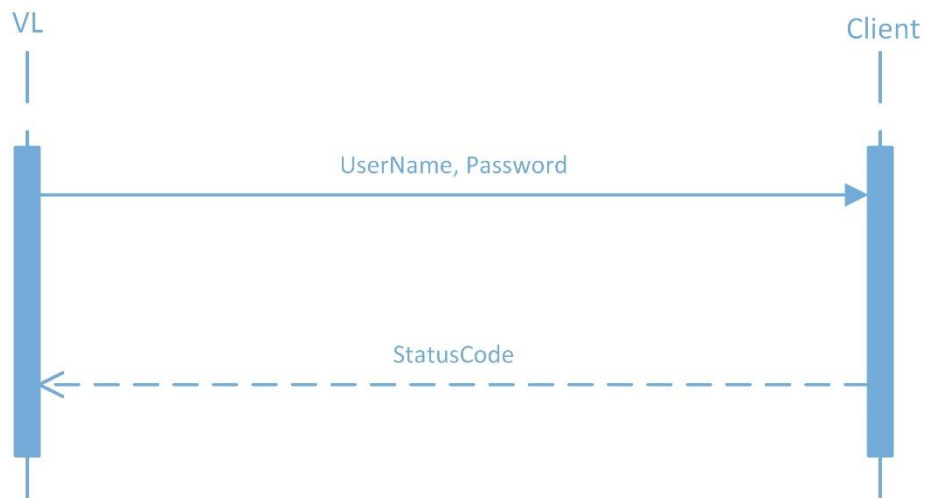


Figure 7 "CheckCredit Sequence diagram"

Request Parameters:

Parameter	Description	Data Type
UserName*	<ul style="list-style-type: none"> User name provided by Victory Link for the sender account 	String
Password*	<ul style="list-style-type: none"> Password provided by Victory Link for the sender account 	String

- **Web service complete URL**
<https://smsvas.vlserv.com/VLSMSPlatformResellerAPI/CheckCreditService/>
- **Request Values Sample (XML)**

```
<?xml version="1.0" encoding="utf-8"?>
<soap12:Envelope xmlns:xsi="http://www.w3.org/2001/XMLSchema-instance"
xmlns:xsd="http://www.w3.org/2001/XMLSchema"
xmlns:soap12="http://www.w3.org/2003/05/soap-envelope">
  <soap12:Body>
    <CheckCredit xmlns="http://tempuri.org/">
      <userName>myUser</userName>
      <password>123456</password>
    </CheckCredit>
  </soap12:Body>
</soap12:Envelope>
```

- **Return Values Sample (XML)**

```
<?xml version="1.0" encoding="utf-8"?>
<soap:Envelope xmlns:soap="http://www.w3.org/2003/05/soap-envelope"
xmlns:xsi="http://www.w3.org/2001/XMLSchema-instance"
xmlns:xsd="http://www.w3.org/2001/XMLSchema">
  <soap:Body>
    <CheckCreditResponse xmlns="http://tempuri.org/">
      <CheckCreditResult>-1</CheckCreditResult>
    </CheckCreditResponse>
  </soap:Body>
</soap:Envelope>
```

Status code	Integer represents the service response code
--------------------	--

- **API complete URL**
<https://smsvas.vlserv.com//VLSMSPlatformResellerAPI/CheckCreditApi/api/CheckCredit>

- **Request Values Sample (JSON)**

```
{
  "UserName":"myUser",
  "Password":"123456"
}
```

- **Return Values Sample(JSON)**

-1	
Status code	Integer represents the service response code

8. CheckDLRStatus: (API only)

This method used to return DLR status for sent messages with DLR.

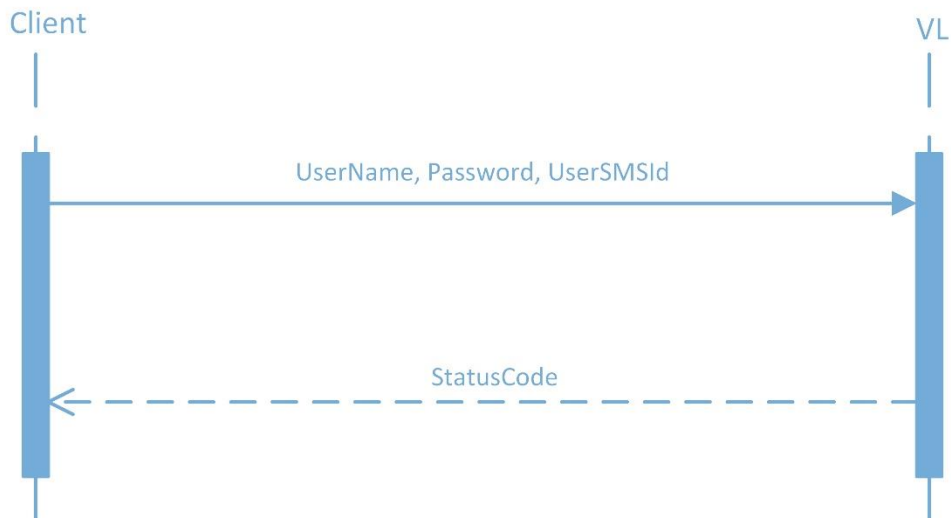


Figure 8 "GetDLRResponseStatus Sequence diagram"

Request Parameters:

Parameter	Description	Data Type
UserName*	<ul style="list-style-type: none"> User name provided by Victory Link for the sender account 	String
Password*	<ul style="list-style-type: none"> Password provided by Victory Link for the sender account 	String
UserSMSId*	<ul style="list-style-type: none"> The text of the message 	String

• **API complete URL**

<https://smsvas.vlserv.com/VLSMSPlatformResellerAPI/CheckDLRStatus/api/CheckDLRStatus>

• **Request Values Sample (JSON)**

```
{
  "UserName": "myUser",
  "Password": "123456",
  "UserSMSId": "00000000-0000-0000-0000-000000000000"
}
```

• **Return Values Sample (JSON)**

1		
<table border="1"> <tr> <td>Status code</td> <td>Integer represents the service response code</td> </tr> </table>	Status code	Integer represents the service response code
Status code	Integer represents the service response code	

V. Methods to be provided by Client:

1. ReceiveDLR: (API)

- This method must be created by the client to receive the DLR status in case of using the SendSMSWithDLR method and the account has the privilege to receive DLR.
- The client provides Victory Link with URL to receive the DLR status parameters values (This URL may be the URL that added when the client’s account created on VL SMS platform, or the system will use the URL which added by client while using SendSMSWithDLR method)

- The RecieveDLR will be called with the following format with Get verb over HTTP(s): [Client Receive DLR Status URL]?userSMSId={0}&dlrResponseStatus={1}
- In case of the client needs to add more parameters to the mentioned parameters of this API, he shall provide Victory Link with it.
- Client can get the DLR full report through his account on the reseller reporting tool.

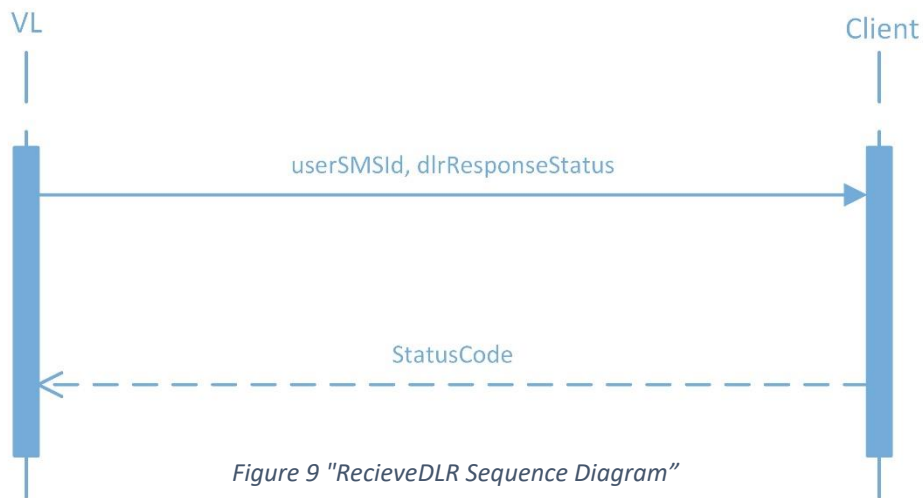


Figure 9 "RecieveDLR Sequence Diagram"

Request Parameters:

Parameter	Description	Data Type
userSMSId*	<ul style="list-style-type: none"> • The SMS global unified ID which generated by the client and sent through methods that have the DLR option 	GUID
<u>dlrResponseStatus*</u>	<ul style="list-style-type: none"> • SMS delivery report status: <ul style="list-style-type: none"> ○ DeliveredToPhone (SMS delivered successfully) ○ NonDeliveredToPhone RecieveDLR (SMS not delivered) ○ Queued RecieveDLR (SMS still in the queue) ○ SentWithoutReceivingDLR (SMS has sent without receiving DLR option) ○ Failed (SMS failed to send) 	String

- Request Values Sample

```
{
  "userSMSId"= "5f50f470-3295-4e35-9005-2f54a0fd7459",
  "dlrResponseStatus" = "1"
}
```

VI. All Code Values:

The following table shows the code values of the different statuses, and the API/Web service which use it (**Common** means that the code value used in all APIs/Web services):

Code	Description	Method	Scenario
0	Success	Common	SMS sent successfully, and in case of "CheckCredit" method, it means client quota is unlimited
-1	Invalid Credentials	Common	Invalid username or password
-2	Invalid Account IP	Common	SMS has been sent by an account through not white listed IPs of the sender's account
-3	Invalid ANI Black List	Common	SMS sent to black listed dial of the sender's account
-5	Out Of Credit	Common	Account's quota has ended
-6	Database Down	Common	SMS platform database down
-7	Inactive Account	Common	The sending account isn't active
-8	No DLR received	GetDLRResponseStatus	In case of SMS submitted and sent but no delivery report received from operator yet

-11	Account Is Expired	Common	The account exceeded the expire date
-12	SMS Is Empty	Common	There is no text
-13	Invalid Sender With Connection	Common	There is a problem with the connection
-14	SMS Sending Failed Try Again	Common	While sending SMS an error occurs and SMS not sent
-100	Other Error	Common	Internal server error
-16	User Can Not Send With DLR	SendSMSWithDLR, SendOfflineSMS	This account doesn't have the send with DLR option.
-18	Invalid ANI	Common	ANI is wrong
-19	SMS Id Is Exist	Common	Repeated SMS Id, and SMS ID must be unique
-21	Invalid Account	Common	The sending account is not exist in the system
-22	SMSNotValidate	Common	SMS not validate yet because the database is down, it will be validated later and send to kannel
-23	Invalid Account Operator Connection	Common	The connection is wrong
-26	Invalid User SMS Id	Common	SMS ID not a GUID
-29	Empty User Name Or Password	Common	User name or password fields has no data
-30	Invalid Sender	Common	Invalid SMS fake sender
-31	InvalidStartTime	SendSMSWithValidity	The start time is invalid
-32	InvalidSMSTemplateOrItems	SendSMSWithTemplate	In case of the client enters a key not included in the "Items" parameter

1	DeliveredToPhone	GetDLRResponseStatus, CheckCredit	<ul style="list-style-type: none"> • In case “GetDLRResponseStatus” methods, it means SMS delivered successfully • In case of “CheckCredit” method, it means client quota is 1 SMS
2	NonDeliveredToPhone	GetDLRResponseStatus, CheckCredit	<ul style="list-style-type: none"> • In case of “GetDLRResponseStatus” methods, it means SMS not delivered • In case of “CheckCredit” method, it means client quota is 2 SMS
3	Queued	GetDLRResponseStatus, CheckCredit	<ul style="list-style-type: none"> • In case of “GetDLRResponseStatus” methods, it means SMS still in the queue • In case of “CheckCredit” method, it means client quota is 3 SMS
4	SentWithoutReceivingDLR	GetDLRResponseStatus, CheckCredit	<ul style="list-style-type: none"> • In case of “GetDLRResponseStatus” methods, it means SMS has sent without receiving DLR option • In case of “CheckCredit” method, it means client quota is 4 SMS
5	Failed	GetDLRResponseStatus, CheckCredit	<ul style="list-style-type: none"> • In case of “GetDLRResponseStatus” methods, it means SMS failed to send • In case of “CheckCredit” method, it means client quota is 5 SMS

N	Client Quota	CheckCredit	Positive number describe number of available SMS credit for client to send
---	--------------	-------------	--